

BC WORKS!

The City of Battle Creek's Department of Public Works Newsletter

Inside This Issue

- **Linear Park**
- **Water Conservation**
- **Recycling Resources**
- **2023 Events**
- **Storm Sewers**
- **Construction Season**
- **Invasive Species**
- **Flushable Wipes**



Battle Creek's Linear Park

Welcome Spring! It's a great time to check out all the recent improvements to the City of Battle Creek's Linear Park. The park, completed in 1997, links over 26 miles of non-motorized, paved pathway throughout the City and adjoining areas. The park was paid for from Michigan Land Trust and the W.K. Kellogg Foundation funding and is maintained by the City of Battle Creek.

The Linear Park has received some recent upgrades. In 2020 the Southwest Michigan Urban League received funding for tree canopy maintenance and a park bench on the stretch between Kendall and Angell Streets. In 2021, the City received a Michigan Department of Natural Resources (MDNR) Pollinator Habitat grant to convert over 7.5 acres of mowed area along the Linear Park to pollinator habitat. Areas between Angell Street and Stringham Road were seeded in the fall of 2021 and are being mowed on a prescribed schedule to help minimize weed growth while the habitat establishes. As part of this MDNR grant funding, 750 native plant plugs and 25 trees were purchased and installed (by volunteers) along the Linear Park to further enhance habitat and aesthetics. The 2021 and 2022 Calhoun County Parks millage allocation for Battle Creek provided funding for resurfacing of 1.6 miles of the paved trailway, tree canopy maintenance, and accessible ramp updates on the section between Washington and 20th Streets. This work was completed during the summer of 2022.

CONTINUED



Contact us:

City of Battle Creek
Department of Public Works
150 S. Kendall St., Battle Creek, MI 49037
269-966-3507
<https://battlecreekmi.gov/publicworks>

Additionally, the Battle Creek Community Foundation (BCCF) funded a bench as well as an invasive species survey and management plan for the park from Emmett Street to Stringham Road on the north side of the rivers. This survey and plan will help the City more efficiently manage this valuable resource. Also in 2022, the BCCF's Thelma Greer Tree Fund supported the purchase and site preparation of an additional 15 trees along the trailway. A big thank you to all the project partners for the funding to keep the Linear Park a wonderful asset for the community and our visitors!

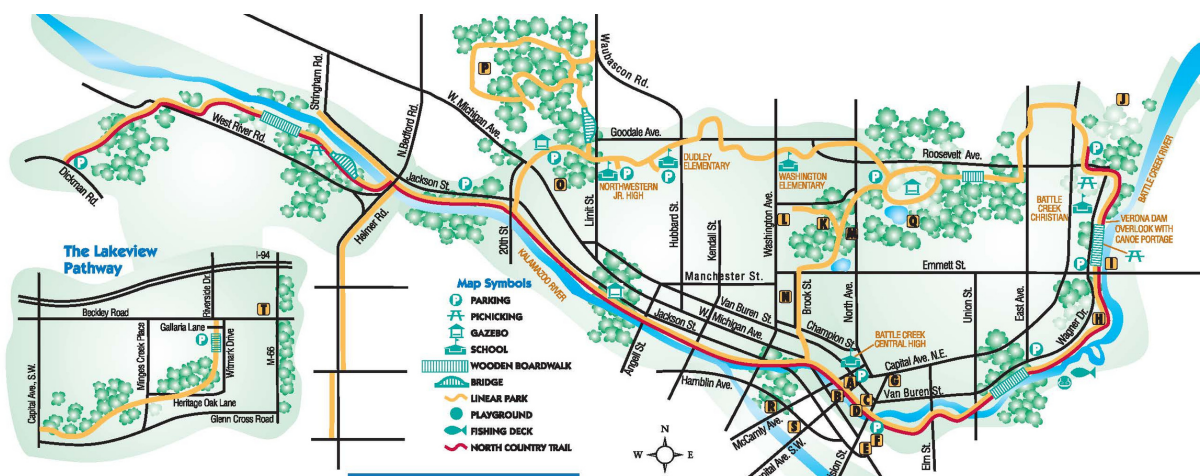
To volunteer for park cleanup events, contact the City's Environmental Department at 269-966-3355 ext. 1889 or bestears@battlecreekmi.gov.

To learn more about all the City of Battle Creek's parks, playgrounds and trails, visit:

<https://www.bcparks.org/27/Parks-Trails>



Download a Linear Park map at:
www.bcparks.org/DocumentCenter/View/565/Linear-Park-NEW-MAP



A Few Safety Reminders
 To make your experience on the Linear Park more enjoyable, please follow these safety tips:

- No motor vehicles permitted.
- The Linear Park closes 1/2 hour after sunset.
- Keep all dogs on a leash.
- Stay to the right of the path so faster users can pass you safely.
- No speed cycling.
- Be careful crossing streets on the Linear Park.

Point to Point Approximate Distances

Downtown Friendship Park to Bailey Park	3 miles
Bailey Park to KCC	2.25 miles
KCC to Leila Arboretum	2.5 miles
KCC to Downtown Friendship Park	1.75 miles
20th Street at Jackson to Dickman Rd.	3.6 miles

Benefit Statement
 Enjoying the outdoors is beneficial to your health both body and mind. It's easy to recharge your batteries with a walk, run or bike ride along any of the 4 Linear Park Loops. End the day by taking the time to smell the flowers and have a picnic with your family at any of the scenic stops along the way.

A Few More Things to Remember

- The Linear Park is wheelchair accessible.
- For more information on the Linear Park, or for additional brochures, please call the Battle Creek Parks and Recreation Department at (269) 966-3431 or find us on the Web at www.bcparks.org.

North Country Trail Web address: www.northcountrytrail.org



WHERE DOES MY WATER COME FROM?

The City of Battle Creek's drinking water comes from groundwater - specifically water from the Marshall Aquifer. Groundwater fills the pores and fractures in the sand, gravel and other underground materials much like water fills a sponge. The groundwater is pumped to the surface at the City's Verona Well Field where it is treated and distributed to residential, commercial and industrial water users. Some residents may get their water from a personal well on their property instead of City water.

The demand on the Marshall Aquifer is great as it supplies water to residents, industries, businesses and agricultural users in many Southern Michigan communities (including Battle Creek, Kalamazoo, Howell, Marshall, Albion and others). In Michigan, the Marshall Aquifer stretches across 52 counties.

Taking measures to reduce water use will help conserve this resource. And less water use means lower water bills!



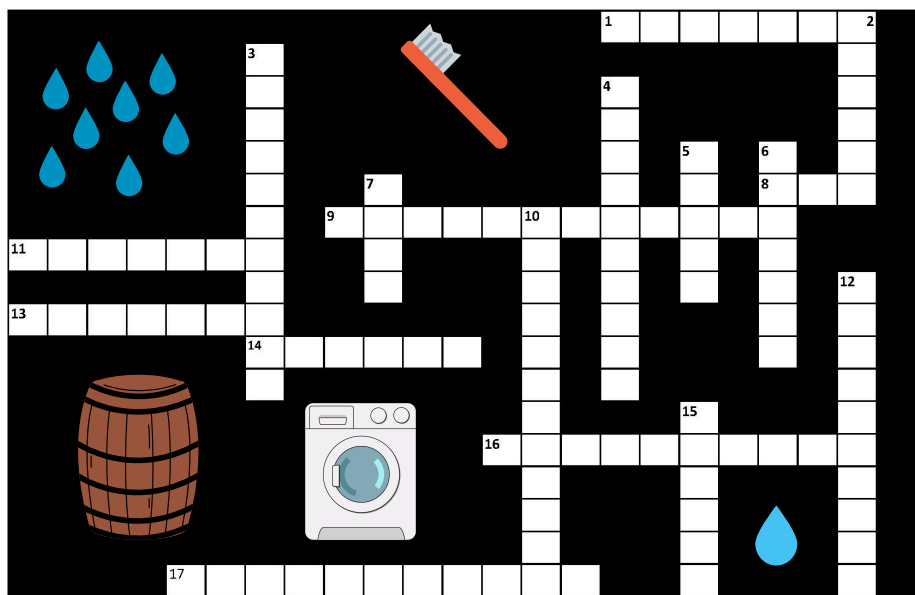
CONSERVATION

Did you know?

- The average American uses 80 gallons of water per day.
- Low-flow showers use about 2 gallons of water per minute.
- Baths can use up to 20 to 50 gallons of water.
- Older toilets can use up to 6 gallons per flush, while newer, water-efficient models use about 1.6 gallons per flush.
- A faucet leaking at one drip per second can waste more than 3,000 gallons of water per year!

To calculate your daily water use, visit the US Geological Survey's website at:

<https://water.usgs.gov/edu/activity-percapita.html>



ACROSS

- 1 An _____ is an underground layer of water-bearing, permeable rock, rock fractures, or unconsolidated materials.
- 8 Always turn the water _____ while brushing teeth.
- 9 Water that is NOT underground
- 11 A type of toilet that saves water
- 13 The flow of a river
- 14 How many gallons of water does the average person, in the US, use each day?
- 16 Container that collects rainwater
- 17 An impurity in air, soil or water

DOWN

- 2 Precipitation that runs over land to surface water.
- 3 Water contained under the earth's surface.
- 4 Where the river starts
- 5 A liquid that all living things need to survive
- 6 Time of day we should water lawn or garden
- 7 Only run _____ loads of laundry and dishes.
- 10 The use of water saving methods
- 12 Chemicals used to improve the soil and promote plant growth.
- 15 Channel created when a river erodes its bed

- Morning
- Groundwater
- Contaminant
- Headwaters
- Surface Water
- Full
- Off
- Conservation
- Runoff
- Canyon
- Rain Barrel
- Eighty
- Low Flow
- Fertilizer
- Water
- Aquifer
- Current

Meter Reading Improvements

The City of Battle Creek has taken measures to increase the efficiency of their public water supply metering system. Water meters record water use at all buildings supplied by City water.

In 2016, the City fully implemented the fixed network read system, the Neptune 360, which has significantly reduced the amount of labor, travel time, vehicle wear and tear and fuel use that was previously required to collect on-site meter readings. The water meters in homes are connected to the R900 components (pictured) that relay the water use information to 24 data collectors located throughout the City. The data are then downloaded directly from a cloud-based system instead of requiring on-site visits inside customer's homes. In addition to the significant savings in labor and equipment costs, the City is now reading all 18,000 plus meters at a 95 to 100 percent accuracy with minimal effort.



Water Department staff download the meter usage data from the new system on a weekly basis and forward the information to the Utility Billing Department. This allows for more timely water consumption data and helps to settle any questions or challenges to a customer's water bill. With this system, the City has been able to more accurately bill for water use, reduce water loss and provide better customer service. The City now has improved their ability to help commercial and residential customers pinpoint high water usage and active leaks in a timelier fashion and reduce water waste and potential property damage. The City is now in the process of changing out water meters, so they read down to the cubic foot of usage. This will help with detecting even smaller leaks in the system - resulting in savings in water and costs!

RECYCLING RESOURCES

Republic Services Cart Rentals

Recycling carts are available at no additional charge to single family residences. Need two carts? Additional recycling carts can be rented for \$39/yr. The carts with the light blue lids can ONLY be used for recycling. To request or rent a recycling cart call **(269) 216-8008**. **Recycling carts mistakenly used for trash or yard waste will be tagged and removed to minimize contamination of the recycling load.**

City residents receiving solid waste services also have the option of renting carts from Republic Services for trash (black lid) and yard waste (brown lid) for \$39/yr for one (and an additional \$30/yr for each additional cart) or they can use their own garbage and yard waste containers. To rent a 96-gallon, wheeled cart, call Republic Services at **(269) 216-8008**. If a customer chooses to use personal garbage and yard waste containers, they must meet the following guidelines:

- Personal containers are the responsibility of the resident to maintain.
- Containers must be between 20 - 32 gallons and constructed of substantial plastic, metal or fiberglass with a tightly fitting lid and handles.
- Containers must be portable, watertight and vermin-proof.
- Containers must have a top diameter greater than or equal to that of the base.
- Please place garbage in plastic bags inside your container to minimize loose trash scattering when containers are emptied.
- Garbage and other refuse, except materials intended for recycling and yard waste, may be deposited in sealed plastic bags.
- Personal yard waste containers must be clearly marked "Yard Waste Only." Free stickers are available at the Department of Public Works, 150 S. Kendall Street, Battle Creek or City Hall, 10 N. Division Street.
- Yard waste can also be placed in biodegradable paper yard waste bags. Brush and twigs may be put in bundles no longer than 4' in length and 1' in diameter. Do not put yard waste in plastic bags.
- Full personal containers can weigh no more than 50 lbs.
- Full rented carts can weigh no more than 250 lbs.

Weight restrictions are for the safety of the waste haulers.

**BLACK lid
Garbage ONLY**



**LIGHT BLUE lid
Recycling ONLY**



**BROWN lid
Yard Waste ONLY**



Republic Services yard waste pick up for City of Battle Creek customers begins the week of April 3, 2023.



Recycling Resources



So what can you do with those items that are not accepted in the City's curbside recycling program? The City and Calhoun County host many special collection events throughout the year, but if you can't make it to those, below are some additional waste disposal resources. Be sure to call ahead for hours and to see if your items will be accepted.

- **Plastic bags and films:** *Meijer* stores accept clean and dry plastic grocery bags, zip-top storage bags, salt bags, plastic cereal liners, bread bags, product film wraps, ice bags, salt bags, dry cleaning bags
- **Household Hazardous Waste:** *Kalamazoo HHW Center* (1301 Lamont Avenue, Kalamazoo, MI, 269-383-8742 - fees apply) see: <https://www.kalcounty.com/hcs/eh/hhw>
Household hazardous wastes are products such as paints, oils, batteries, and pesticides that contain hazardous ingredients and require special care when you dispose of them.
- **Used motor oil and oil filters:** Most oil change businesses and auto supply stores take used oil at no cost
- **Medications:** Unused/expired medications can be disposed of in a Red Med box. For a listing of drop off locations, visit: <https://www.drugfreebc.org>, then click "Helpful Links" then "Red Med Box Locations"
- **Sharps:** *Toeller Building* (190 E. Michigan Ave., Battle Creek, MI) Drop-boxes are for residential use only and require the sharps to be placed in a shatterproof container such as a small sharps collection container or a rigid plastic container with a tight lid. Disposal of loose sharps is not allowed in the drop box.
- **Cardboard:** *Reclaim Synergy* (101 Bishop Drive, Springfield, MI, 440-252-2624)
- **Styrofoam:** Free drop off at the *Marshall Recycling Center* (13300 15 Mile Rd., Marshall, MI), *Dart Container* (432 Hogsback Rd., Mason, MI, 517-676-3800) and *Biz Aid* (90 Darling Drive, Coldwater, MI, 517-227-4901)
- **Batteries & compact fluorescent bulbs (CFLs):** *Batteries Plus Bulbs Store* (15611 S. Helmer Rd., Battle Creek, 269-965-6733 - fees may apply)
- **Scrap metal:** *Franklin Metal* (120 South Ave., Battle Creek, MI, 269-968-6111)
- **Electronics/appliances:** *Best Buy* (12765 Harper Village Dr., Suite 160, Battle Creek, MI, 269-979-8336 - fees may apply) or *Franklin Metal* (see above)
- **Tires:** *Pomps Tires* (4251 West Columbia Ave., Battle Creek, MI, 269-964-6697). Disposal fees apply.
- **Yard Waste:** *Brice Pit* (715 West River Rd., Battle Creek, MI).
- **Other?:** Check the Calhoun County "Recycling Guide" at: https://www.calhouncountymi.gov/departments/recycling_and_solid_waste/ then look for "Recycling Guide" on the left bar.
- Also visit the "Michigan Recycling Directory" for more recycling options at: <https://recyclesearch.com/profile/michigan-directory>

2023 RECYCLING COLLECTIONS AND ENVIRONMENTAL EVENTS

Polystyrene #6 (Styrofoam) Recycling - City of Battle Creek residents only

ACCEPTED:

- ✓ Egg cartons, take-out food containers, meat trays, drink cups, disposable coolers and packing materials. All materials must be clean and dry.

Pre-sort items into food containers and coolers/packing material to help volunteers process materials more quickly.

NOT ACCEPTED:

- ✗ Packing peanuts, insulation sheets, flexible foam wrap



Department of Public Works
150 S. Kendall St., Battle Creek



Wednesday, Sept. 6
3 - 6 p.m.

Scrap Tire Recycling - City of Battle Creek residents only

ACCEPTED TIRES:

- ✓ Lawn mower; Residential passenger vehicles (cars/trucks); Semi tires; Motorcycle tires

NOT ACCEPTED:

- ✗ Tractor tires; Tires with rims; **NO COMMERCIAL TIRES**

Residents are allowed a maximum of 10 tires per visit.

Bailey Park
1350 Capital Ave. NE, Battle Creek



Saturday, Sept. 9
11 a.m. - 2 p.m.

Electronics Recycling - City of Battle Creek residents only

ACCEPTED:

- ✓ Computers, Computer equipment, Laptops, LCD monitors, CRT monitors, Printers, Wires and cords, Computer peripherals, Copy/fax machines, Audio-visual equipment, Plasma televisions, LCD televisions, Tube televisions, Game consoles, Stereo equipment, Lamps, Small kitchen appliances and electronics, batteries, string lights

NOT ACCEPTED:

- ✗ Scrap metal, large household appliances and those containing Freon.



Bailey Park
1350 Capital Ave. NE, Battle Creek



Saturday, Sept. 9
11 a.m. - 2 p.m.

Other Events

2023 Calhoun County Recycling Events (Free to all Calhoun County residents)

Electronics, Tires, and Household Hazardous Waste

Visit the Calhoun County website for current information.

https://www.calhouncountymi.gov/departments/recycling_and_solid_waste/events.php



Earth Day/Linear Park Cleanup

April 17-23



Krazy for the Kazoo River Cleanup

Saturday, October 7, 9 - 11 a.m.

Pre-registration is required for cleanup events.

Visit: bcwater.org or contact Bessie Stears at

bestears@battlecreekmi.gov or (269) 966-3355 ext. 1889

for more information.



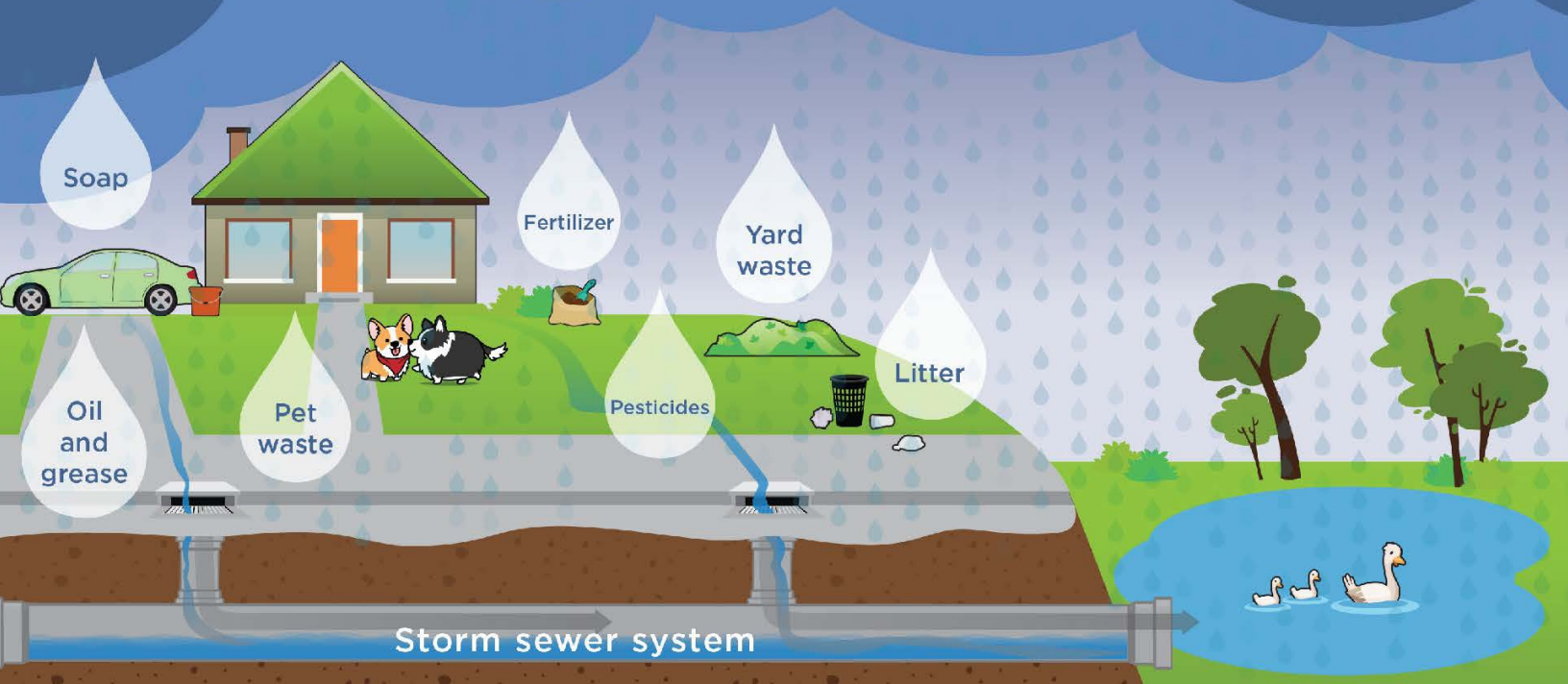
***All events are subject to change.**

For an updated listing, visit: bcwater.org/events.

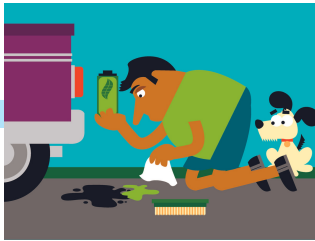
STORMWATER

The City of Battle Creek has a "Municipal Separate Storm Sewer System" (MS4) meaning that our stormwater is collected in pipes that are separate from our sanitary sewer pipes which transport wastewater to the wastewater treatment plant. Stormwater is the water that runs off hard surfaces during a rain or snow melt event. In urban areas where there is a lot of pavement, the stormwater can't soak back into the ground so it runs into the street and enters the storm sewer system through the grates and curb cuts along the streets. This underground network of pipes carries the stormwater - and everything that washes off the surface with the stormwater - to a river, lake or wetland UNTREATED. So, all the trash, cigarette butts, pet waste, de-icing salt and lawn chemicals that wash off the pavement have a direct connection to our surface waters.

Pollution travels downstream and winds up in our rivers, lakes, and streams.



Here are a few simple things you can do to protect our waterways:



- Pick up after your pet with waste bags and dispose of in trash.
- Collect and dispose of litter.
- Reduce the use of de-icing salt (target ~3 inches between granules).
- Minimize the use of pesticides and fertilizers.
- Keep grass clippings and leaves out of the streets.
- Wash your vehicle at a commercial car wash.
- Keep your vehicle maintained and check for leaks.
- Use rain barrels to collect rain water for plants and gardens.
- Maintain on-site septic systems.
- Dechlorinate pool water and discharge it over grassy areas.
- Call 911 to report suspicious materials entering the storm sewer, ground or surface water.

CONSTRUCTION SEASON 2023



Pending approval from the City Commission, the Engineering Division is preparing the following projects to be completed during the 2023 construction season.

The following roads will be **Chip sealed**:

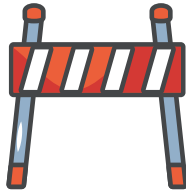
- 28th St. – Goguac St. to Columbia Ave.
- 29th St. - Goguac St. to Columbia Ave.
- 30th St. - Goguac St. to Columbia Ave.
- 31st St. - Goguac St. to Columbia Ave.
- 32nd St. – Goguac St. to Territorial Rd.
- 33rd St. – Goguac St. to Highland Blvd.
- Iroquois Ave. - 28th St. to 31st St.



What is **Chip seal**? Inexpensive, effective method to extend pavement life, by applying small chips in a liquid asphalt. The road is swept to remove dust, a liquid layer is sprayed onto the road, and chips are applied and rolled over.

The following roads will be **Resurfaced**:

- Capital Ave. SW – Vanburen St. to Rebecca Rd.
- McKinley Ave. – Emmett St. to Capital Ave. NE
- Wabash Ave. – Emmett St. to Capital Ave. NE
- Broad St. – Bryant St. to Capital Ave. NE
- Piper Ave. – Bryant St. to Sherman Rd.
- Bryant St. – Wabash Ave. to Convis St.
- Radley St. – Wabash Ave. to Woodward Ave.
- Sherman Rd. – Broad St. to East Ave.
- Sherman Rd. - McKinley Ave. to Wabash Ave.



What is **Resurfacing**? A quick process in which 1.5 to 2 inches are milled off the top, enough to remove defects, after which a new layer of asphalt is laid. Prior to road work crews will also perform lead service line replacement.

The following locations will receive **Water Main Replacement**:

- Euclid Ave. – Cliff St. to E. Kingman Ave.
- Inn Rd. – Cliff St. to E. Kingman Ave.

Full replacement of water infrastructure along with associated road improvement including road surface.

The following locations will receive **Water Main Extension**:

- Helmer Rd. from North of I-94 to Beckley Rd.
- Beckley Rd. from Helmer Rd. to Minges Rd.

This work will allow the City to service additional neighborhoods while also creating a loop that will help keep residents in service in the event of a break.

The following locations will receive **Water Main and Storm Sewer Replacement**:

- Lakeview Ave. – LaVista Blvd. to Foster Ave.
- Foster Ave. – Surby Ave. to Columbia Ave.

This work will allow the City to service additional areas with water in the future and replacing failing storm sewers to alleviate drainage issues.

Questions/concerns should be forwarded to Jarret Geering, City Engineer, at (269) 966-3343 or by email at jtgeering@battlecreekmi.gov

Customers can also get information on these projects by signing up for alerts here: <https://www.battlecreekmi.gov/notifyme>

The following location will receive **Sanitary Sewer Replacement**:

- Sisson Ave. from Riverside Dr. to end (Sanitary)

This work will involve installing lift station and new residential service to alleviate frozen service line issues.

The following location will receive **Storm Sewer Replacement**:

- S. 23rd St. – Sanwood Dr. to Terry Ct.

This work will involve replacing failing storm sewer to alleviate drainage issues.

The following road will be reconfigured to a **Roundabout**:

- Hill Brady Rd. and Skyline Dr.

This project will involve removing the existing intersection to install a roundabout to accommodate the new entrance to the Air National Guard base and improve traffic flow.

In addition to this work, the Michigan Department of Transportation will begin year one of a three-year Design Build project along the I-94 corridor. Major work will include the replacement of the Capital Avenue bridge over I-94 that is planned to begin after the July 4th holiday weekend.

As the construction season nears, impacted neighbors will be notified by the project personnel of the anticipated timelines.

Neighbors along these routes may encounter team members performing maintenance and inspections prior to projects beginning. This could include activities like tree trimming, valve exercising, lead service line replacement and sewer inspection.



A note from our Engineering Team:

Construction season will soon be underway. Please be on the lookout for the orange barrels. "The road to success is always under construction."



To view the 2023 Street Treatments Map go to battlecreekmi.gov/publicworks, click on "Engineering", and scroll to "Road Surface Treatments."



Invasive Species Spotlight

An invasive species is defined as one that is not native and whose introduction causes harm, or is likely to cause harm to Michigan's economy, environment, or human health. Invasive species don't respect property boundaries and can easily spread from site to site once established in an area.

One particularly aggressive invasive plant found in Battle Creek is Japanese knotweed (*Fallopia japonica*), pictured below. This shrub can grow from 3-10 feet high with hollow stalks resembling bamboo. The white flowers grow in spikes along the stem and bloom in August and September. This plant releases chemicals that can suppress the growth of beneficial native vegetation which can degrade wildlife habitat.

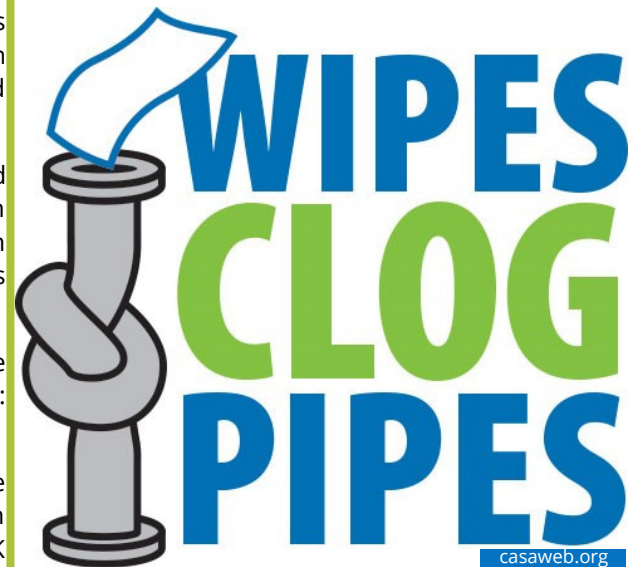
The State of Michigan has photos and a wealth of information about Japanese knotweed and other invasives found in Michigan at: <https://www.michigan.gov/invasives>.

If you think you might have an invasive species on your property and would like assistance in removing it, property owners can contact the staff at the Barry, Calhoun and Kalamazoo Counties Cooperative Invasive Species Management Area (BCK Cisma). The Cisma has trained professionals that can consult with property owners and provide strategies to manage invasives. There are also cost-share programs for some high-priority species. Contact the BCK Cisma at barryconservation@gmail.com or at (269) 908-4139.



Japanese knotweed

Wipes in the Pipes



Please remember that those "flushable" wipes and tissues should NOT be flushed down the toilet. These materials don't degrade like toilet paper and get caught in the City's sewer pipes, causing costly clogs and potential damage to the City's infrastructure, personal property and the environment.

Only human waste and toilet paper should be flushed. Thanks for your help keeping the water flowing!