

BC WORKS!

The City of Battle Creek's Department of Public Works Newsletter

Inside This Issue

- Lead Service Lines
- Forest Management
- Recycling Resources
- 2023 Events
- Free Compost
- City Earns Gold
- Prevent Clogs
- 2023-2024 Construction
- Meet the New Director



City Continues Replacement of Lead Service Lines

The City of Battle Creek continues their efforts to replace lead drinking water service lines within the City's water system to comply with State of Michigan (and US Environmental Protection Agency (EPA)) regulations. The State requires replacement of an average of 5% of a public water supply's known (or suspected) lead service lines per year, which will result in 100% replacement by the year 2041. The City has a total of 19,531 water service lines.

Service lines are the pipes that connect a home to the City's water main (see Figure 1 on next page). The public side is typically the portion that extends from the water main to the property boundary, while the private side extends from the property boundary into the home. Lead was commonly used for plumbing lines from the 1800s until 1986 when the Safe Drinking Water Act Lead Ban was enacted.

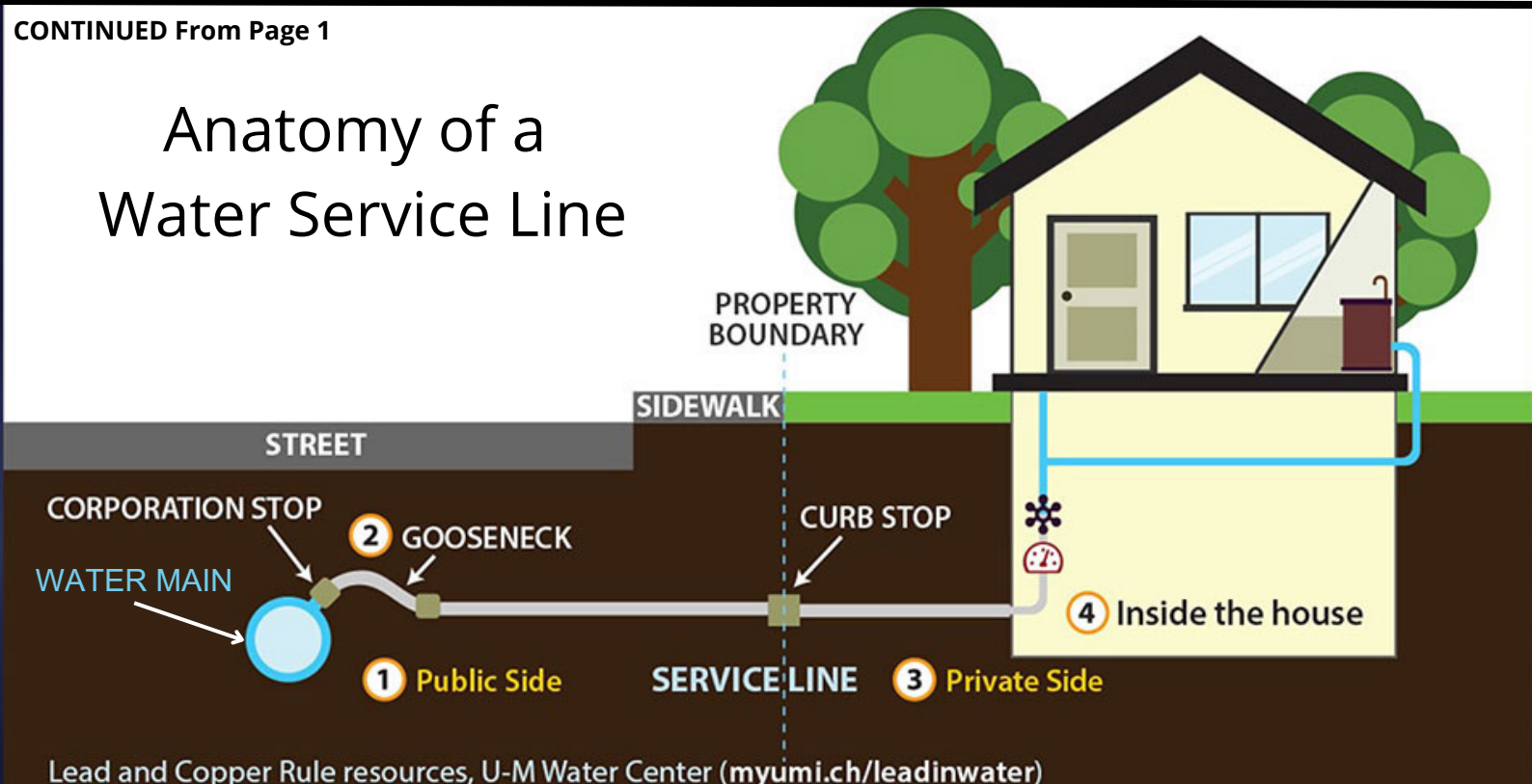
While the presence of lead service lines can increase the chances of lead exposure, the City tests our drinking water daily and treats the water with an anti-corrosion product (ortho-phosphate) to keep the lead from leaching from the pipes. To add an additional level of safety to the City's drinking water supply, the Water Department collects 30 samples each year from homes throughout the City to confirm the effectiveness of the corrosion control.

CONTINUED

Contact us:

City of Battle Creek
Department of Public Works
150 S. Kendall St., Battle Creek, MI 49037
269-966-3507
battlecreekmi.gov/publicworks

Anatomy of a Water Service Line



Lead and Copper Rule resources, U-M Water Center (myumi.ch/leadinwater)

Figure 1. Public Water Line Schematic

Service lines are made of one of the following materials: lead, galvanized steel, plastic, brass or copper (see Figure 2). When service lines are replaced, the curb stop (typically in a customer's front yard - Figure 1) is excavated. Crews then feed a cable through the inside of the pipe and connect a new pipe behind the old. Depending on the extent of the replacement, Water Department employees or contractors may need access inside a customer's home. Replacements inside a home typically take between three to four hours, with water service shut off needed for about one to two hours. Water meters also may be updated, if necessary, at the time of service line replacement.

Types of Water Pipes (Service Lines)

Lead – A dull, silver-gray color that is easily scratched with a coin. Use a magnet - strong magnets will not cling to lead pipes.



Galvanized – A dull, silver-gray color. Use a magnet - strong magnets will typically cling to galvanized pipes.



Plastic – White, rigid pipe.



Brass – Dark reddish brown to a light silvery color. Older pipes may be corroded and may contain lead.



Copper – The color of a penny.



Figure 2. Types of Service Lines

If you are contacted regarding your water service lines, please call the City's Meter Shop at 269-966-3506 to schedule an appointment to have the material verified. If replacement is necessary, please park vehicles off the street to allow access for crews and equipment.

The City of Battle Creek has water main and service line records dating back to the late 1800s. The system is operated and maintained to be as reliable as possible, while providing safe drinking water and fire protection to the City. Replacement of customer's lead service lines will make a safe water system even safer.



Please take a quick online survey by going to battlecreekmi.gov/195/Geographic-Information-Systems and clicking on "GIS Mapping Applications" on the left or by taking a photo of this QR Code with your cell phone.

City's Forest Management Plan Completed



The City's contracted forester, Natural Capital Forestry, completed a *Forest Management Action Plan* for the City of Battle Creek. This plan outlines strategies for those forested areas in the City considered higher priority for management. After assessing these forested areas, the contractor identified trees suitable for harvest while also considering the overall forest health. This includes retaining a mix of tree species of different ages for healthy forest regeneration and wildlife habitat. Invasive species management is also addressed in the plan.

The City will begin with some select harvesting along the north side of West Jackson Street, west of Bedford Road. (The date is yet to be determined.) The harvest will be based on the forester's guidance for responsible forest management. Funds from the timber harvest will be reinvested into the City's invasive species management and environmental programs. The City will continue to seek alternative funding and grants for additional management efforts.

W	U	C	L	O	G	G	I	N	G	D	H	F	E	Q	U	M	D	T	S
H	B	F	S	E	I	U	W	E	R	O	S	I	O	N	K	J	E	P	L
V	K	F	H	A	T	J	I	A	O	D	E	C	I	D	U	O	U	S	D
M	R	L	T	E	W	B	O	M	U	R	E	T	S	I	R	W	Q	O	T
L	N	O	S	R	V	Z	Q	U	N	T	D	Y	P	L	A	N	T	S	R
X	Y	W	O	O	D	L	A	N	D	S	L	T	J	O	R	D	W	V	E
C	I	E	T	F	O	R	J	K	S	H	I	W	I	L	D	L	I	F	E
L	P	R	U	N	E	R	S	A	K	O	N	V	E	U	Y	G	N	L	T
E	B	S	P	D	C	K	L	S	E	T	G	P	R	I	B	H	S	F	R
A	P	O	C	Z	I	R	T	Y	E	N	M	K	L	U	E	C	A	O	I
R	I	L	A	N	D	S	C	A	P	E	D	E	S	I	G	N	E	R	M
C	R	T	R	W	Q	V	O	L	E	G	H	C	V	W	Q	P	H	E	M
U	S	F	B	Z	N	I	N	H	R	T	M	O	R	E	L	F	T	S	I
T	D	W	O	E	J	K	I	T	S	E	I	S	B	Q	O	J	Z	T	N
T	E	B	R	Q	L	M	F	C	X	B	N	Y	L	U	M	B	E	R	G
I	Y	G	I	V	P	O	E	S	F	R	B	S	P	C	E	Z	T	Y	S
N	E	C	S	K	D	I	R	A	S	U	S	T	A	I	N	A	B	L	E
G	A	H	T	W	P	E	O	H	B	R	L	E	F	R	W	Q	U	D	T
T	Z	O	H	R	T	L	U	F	I	E	A	M	C	W	A	K	P	M	Y
R	I	N	F	C	O	N	S	E	R	V	A	T	I	O	N	H	R	E	U

- Erosion
- Landscape Designer
- Tree Trimming
- Deciduous
- Flowers
- Logging
- Groundskeeper
- Wildlife
- Plants
- Arborist
- Conservation
- Ecosystem
- Woodlands
- Forestry
- Coniferous
- Sustainable
- Clear Cutting
- Lumber
- Pruners
- Seedling



Sign up for the City of Battle Creek's **"NOTIFY ME"** service or **RSS feed** to get email and text alerts on the City's street closures, boil water advisories, solid waste collection news and much more.

Visit: battlecreekmi.gov/AlertCenter.aspx

RECYCLING RESOURCES



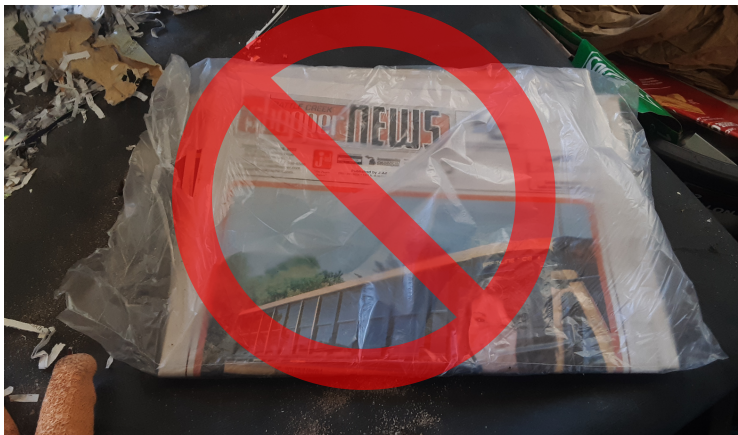
City Recycling Audit



The City of Battle Creek had a great opportunity to see how we are doing regarding contamination levels in our curbside recycling program. As part of a State of Michigan grant, the City of Battle Creek had an "audit" conducted last year, on a representative sample of our curbside recycling. About 400 pounds of materials from the City's recycling collections were sorted into 32 different categories. The findings show Battle Creek residents are doing pretty well recycling with 80% of the collected recyclables considered clean materials.

By weight, the largest amount of targeted (good) recyclable material was mixed paper (45%) and corrugated cardboard (35%). Polyethylene terephthalate (PET) bottles and jars constituted 7% of the sorted material. It is important to note this sort was done by weight, so heavier materials (like paper and cardboard) are more represented in the data than light materials like plastics.

Of the 20% of the materials considered contamination, the largest component was "unacceptable paper" which includes items like waxed/coated containers, paper towels, paper plates, waxed paper, tissue, shredded paper, soiled paper, spiral notebooks (with metal attached), hardcover books and photographs. "Non-plastic bulky contaminants" such as furniture, tires and other large materials accounted for 14% of the contamination, while "bulky rigid plastics" and "other contaminants" (miscellaneous items that don't fit in other categories) constituted 13% each. "Bagged recyclables" were 6% of the contaminated material.



Bagged recyclables are considered contamination. Be sure to keep everything LOOSE in the cart.

Keep up the good work, Battle Creek!

Republic Services 2023 seasonal yard waste pick up for City of Battle Creek customers ends the week of **December 8, 2023.**



Recycling Reminders



Here are a few recycling reminders for our residents that participate in the City's curbside recycling through Republic Services.

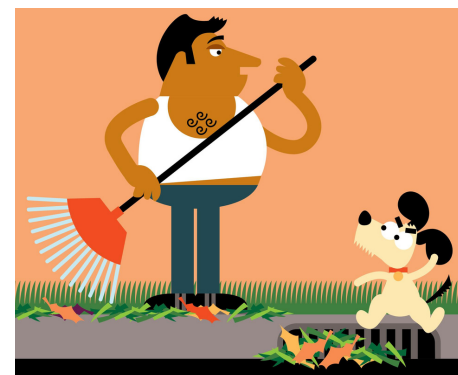
- Keep all materials LOOSE in the recycling cart. If recyclable materials are bagged or boxed, they will be removed from the recycling stream and considered contamination.
- Keep plastic caps on plastic bottles and milk jugs. The small pieces can jam sorting machinery if left loose.
- Remove metal caps from glass bottles and jars. Metal and glass go to different streams at the recycling facility. If metal lids are bigger than 3" (spaghetti sauce, pickle jars) they can be included in your recycling. If they are smaller, either take them to a metal recycler or dispose of them in the trash.
- Not all paper products are recyclable. Paper plates, napkins and towels belong in the trash.
- The chasing arrows (commonly referred to as the "recycling" arrows) do not necessarily mean the material is recyclable in the City's curbside program. The numbers in the chasing arrows tell you what the material was made from. Items like plastic toys and storage containers are not recyclable in your curbside program.
- Films and plastic bags are not accepted in your curbside carts. If you can poke your finger through the plastic, it should not go in your cart. Some retailers like Meijer and Target do accept films and plastic bags.

Residents that have solid waste services through the City of Battle Creek are eligible for one recycling cart at no additional charge. **To request a recycling cart, contact Republic Services at: 269-216-8008.**

Questions? Contact the City of Battle Creek's Environmental Department at 269-966-3355.

Help Keep Streets Clear

As the seasons change, please remember to keep leaves, grass and other yard waste out of the streets. Yard waste can get washed down to the



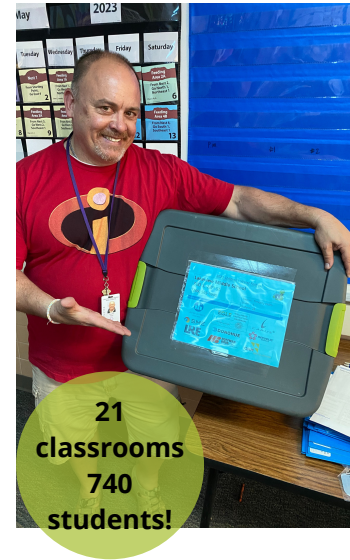
storm sewer inlets and clog the grates causing localized drainage issues. This yard debris will eventually get washed into our waterways carrying excess sediments and nutrients that degrade water quality. Please dispose of yard waste through the city's curbside yard waste collections or residents can dispose of their yard waste at Brice Pit, the city's compost facility, located at 715 West River Road in Battle Creek.

Department of Public Works Events

The City of Battle Creek hosts a number of events each year to help City neighbors with recycling and to provide opportunities for stewardship and enjoyment of our local natural resources. Highlights of our recent events are presented below.

- **Earth Day Linear Path Clean-up:** 50+ volunteers, removed 39 tires and many bags of trash.
- **Children's Water Festival:** 21 classrooms and 740 students participated
- **Rain Barrel Sale:** 51 rain barrels and 4 composters sold
- **Battle Creek Farmer's Market outreach:** 319 visitors over three weeks
- **Styrofoam (Polystyrene #6) collection:** 135 visitors and 1,100 lbs of polystyrene #6 collected
- **Kanoe the Kazoo paddling event:** 54 participants
- **Battle Creek Area Clean Water Partners Photo Contest:** 57 entries

To learn more about City of Battle Creek events and volunteer opportunities, visit bcwater.org/events or contact Bessie Stears at: bestears@battlecreekmi.gov or 269-966-3355, ext. 1889.



Free Compost Available



Calling all gardeners! The City has free compost available for pickup at the City's Wastewater Treatment Plant (WWTP), located at 2000 River Road, Battle Creek. The compost is made from carefully-processed biosolids (nutrient-rich organic materials which remain following treatment of domestic sewage) from the City's WWTP. The compost, called Battle CreEQ Gold, has satisfied a number of criteria required by the State of Michigan to assure that the material is safe for use as compost. By achieving strict time, temperature, stability and maturity requirements of the State, these residuals are able to be classified as Class A Exceptional Quality (EQ) composted biosolids. These approved biosolids can be applied to flower beds, lawns and even vegetable gardens.

Those interested in getting some free Battle CreEQ Gold compost will need to call in advance for a pickup time. Residents are allowed up to one metric ton (roughly a standard pickup truck bed load) per visit. Please contact Rodney Clifton, Wastewater Superintendent at **269-966-3513** to schedule a pick up.



City of Battle Creek Earns Gold!



The City of Battle Creek was awarded gold status for its environmental leadership by the statewide 2023 Michigan Green Communities (MGC) program. MGC is the product of the collaboration and partnership among a number of Michigan organizations including the Michigan Department of Environment, Great Lakes, and Energy (EGLE), Michigan Department of Transportation (MDOT) and the Michigan Department of Natural Resources (MDNR). (For a full list of partnering organizations visit: migreencommunities.com/about/) Local governments can earn bronze, silver or gold designations based on their community leadership in areas such as energy efficiency, climate adaptation and resilience, recycling, planning, water conservation and protection and community engagement. The City's gold designation is a reflection on City-wide efforts to meet our goals. To learn more about the MGC, visit: migreencommunities.com/challenge/

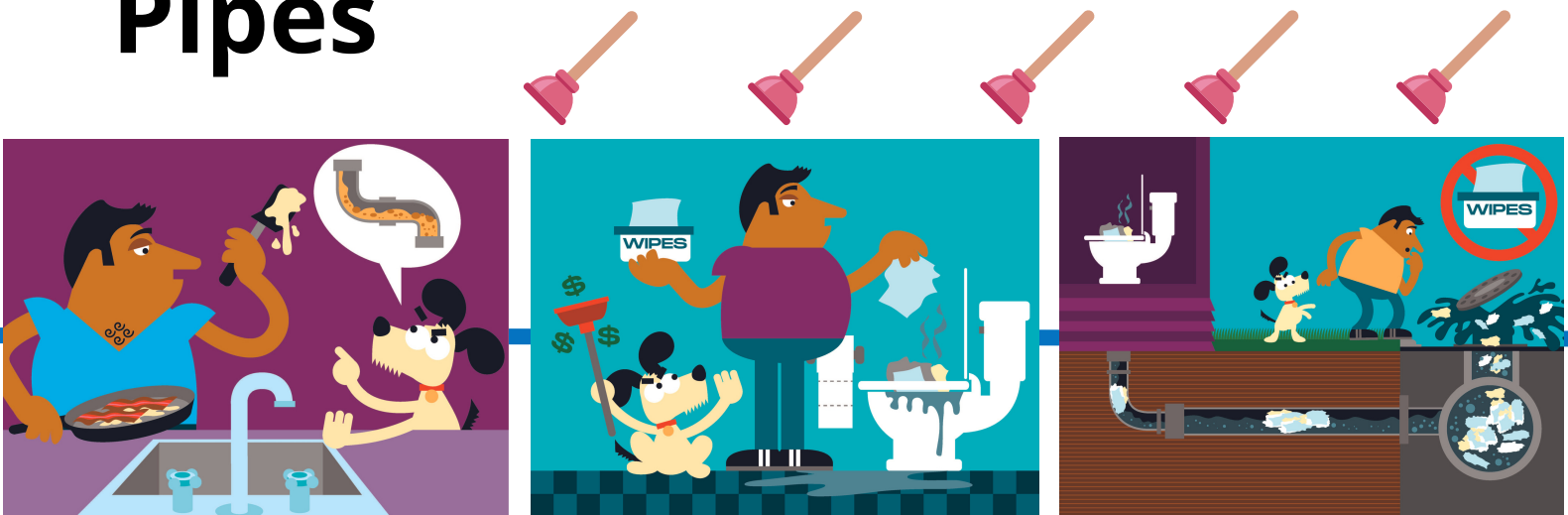
The City also has an established *Sustainability Plan* and a Sustainable BC Committee which meets every other month to track progress toward the identified goals. The City is making great strides in energy efficiency improvements at city facilities, incorporating hybrid vehicles into the City's fleet, increasing recycling access and protecting the community's natural resources. The Sustainability Plan is available online at battlecreekmi.gov and search "Sustainability Plan."

Help Us Prevent Clogged Sewer Pipes

Please help the City of Battle Creek keep the sewer pipes flowing.

- Avoid disposing of fats, oils and grease down your drains. When these materials cool, they solidify and create blockages which can result in clogged pipes.
- Remember that only human waste and toilet paper are meant to be flushed down your toilet. Those "flushable" wipes should NOT be flushed down the toilet. These wipes don't degrade like toilet paper and get caught in the City's sewer pipes, causing costly clogs and potential damage to the City's infrastructure, personal property and the environment.
- Avoid flushing other materials like paper towels, tissues, diapers, and dental floss that won't quickly breakdown and will cause clogs in the sewer line.

Thanks for your help keeping the water flowing!



ROAD CONSTRUCTION 2023-2024



Pending approval from the City Commission, the Engineering Division is preparing the following projects to be completed during the 2024 construction season.

The following roads will be **chip sealed**:

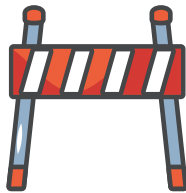
- 28th St. - Goguac St. to Columbia Ave.
- 29th St. - Goguac St. to Columbia Ave.
- 30th St. - Goguac St. to Columbia Ave.
- 31st St. - Goguac St. to Columbia Ave.
- 32nd St. - Goguac St. to Territorial Rd.
- 33rd St. - Goguac St. to Highland Blvd.
- Iroquois Ave. - 28th St. to 31st St.



What is **chip seal**? Inexpensive, effective method to extend pavement life, by applying small chips in a liquid asphalt. The road is swept to remove dust, a liquid layer is sprayed onto the road, and chips are applied and rolled over.

The following roads will be **resurfaced**:

- McKinley Ave. - Emmett St. to Capital Ave. NE
- Wabash Ave. - Emmett St. to Capital Ave. NE
- Broad St. - Bryant St. to Capital Ave. NE
- Piper Ave. - Bryant St. to Sherman Rd.
- Bryant St. - Wabash Ave. to Convis St.
- Radley St. - Wabash Ave. to Woodward Ave.
- Sherman Rd. - Broad St. to East Ave.
- Sherman Rd. - McKinley Ave. to Wabash Ave.



What is **resurfacing**? A quick process in which 1.5 to 2 inches are milled off the top, enough to remove defects, after which a new layer of asphalt is laid. Prior to road work crews will also perform lead service line replacement.

The following locations will receive **water main extension**:

- Helmer Rd. from north of I-94 to Beckley Rd.
- Beckley Rd. from Helmer Rd. to Minges Rd.

This work will allow the City to service additional neighborhoods while also creating a loop that will help keep residents in service in the event of a break.

The following locations will receive **water main and storm sewer replacement**:

- Lakeview Ave. - LaVista Blvd. to Foster Ave.
- Foster Ave. - Surby Ave. to Columbia Ave.

This work will allow the City to service additional areas with water in the future and replacing failing storm sewers to alleviate drainage issues.

The following location will receive **sanitary sewer replacement**:

- Sisson Ave. from Riverside Dr. to end (sanitary)

This work will involve installing a lift station and new residential service to alleviate frozen service line issues.

The following location will receive **storm sewer replacement**:

- S. 23rd St. - Sanwood Dr. to Terry Ct.

This work will involve replacing failing storm sewer to alleviate drainage issues.

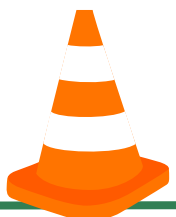
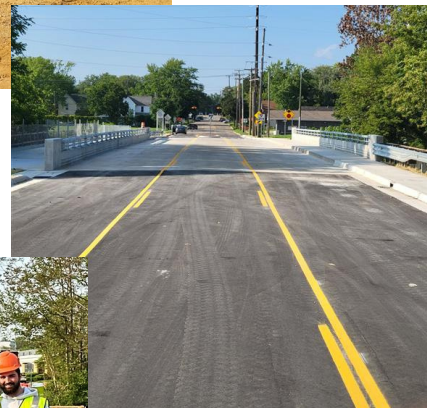
The following intersection will be reconfigured to a **roundabout**:

- Hill Brady Rd. and Skyline Dr.

This project will involve removing the existing intersection to install a roundabout to accommodate the new entrance to the Air National Guard base and improve traffic flow.

Union Street Bridge Replacement Completed

The City's Engineering Team was hard at work this summer overseeing the replacement of the Union Street Bridge over the Battle Creek River. The construction, completed on August 10, took three months to complete. The bridge, which sees an average of 2,600 cars per day, was last replaced in 1980. Along with the bridge replacement, the Linear Path over the bridge was enhanced to a full 10 ft. wide path. Thanks for the great work, Team!



Questions/concerns should be forwarded to Jarret Geering, City Engineer, at 269-966-3343 or by email at jtgeering@battlecreekmi.gov

Customers can also get information on these projects by signing up for alerts here: battlecreekmi.gov/notifyme

To view the 2023 Street Treatments Map go to battlecreekmi.gov/publicworks, click on "Engineering" and scroll to "2023 Street Treatments." 7



Meet Steve Skalski - Department of Public Works Director

Meet our new Department of Public Works Director, Steve Skalski! Steve has been with the City of Battle Creek since February 2023. "I was born and raised in Kalamazoo, Michigan. I graduated from Michigan State University in 1999 with a Bachelor's of Science degree in Civil Engineering. My first job after college was working as a Civil Engineer for Earth Tech, Inc., where I worked for one year. After that, I worked for the City of Kalamazoo from May 2000 to January 2003, when I started working for the Allegan County Road Commission. I left the Road Commission in May 2007 to return to the City of Kalamazoo, where I worked as a Senior Civil Engineer, Assistant City Engineer, and most recently, Water Superintendent, until I left to come to the City of Battle Creek in February of this year. In my free time, I enjoy golfing, camping, and other outdoor activities. I am married with three kids, two boys ages 14 and 9, and one girl age 7. I have really enjoyed the new challenge working as DPW Director of Battle Creek. One of the things that I like best about working for Battle Creek are the people I work with. Everyone has been very welcoming to me, and there is a lot of collaboration and teamwork that goes on here."

Helpful Numbers

Need to talk to City Staff?

We now have a one-call shop to answer your non-emergency city questions, and help you with service needs.

Hours: 8 a.m.-5 p.m. Monday-Friday

269-966-3311

Always call 911 for emergencies

Water or sewer emergency?

Report emergency issues related to water and sewer on nights and weekends.

269-966-3493

Streetlight out?

Report any issues related to the City's streetlights to Consumers Energy by calling **800-477-5050** or online at

streetlights.consumersenergy.com

Missed garbage or recycling?

Report missed collections or other solid waste services questions to Republic Services by calling

269-216-8008

