

BC WORKS!

The City of Battle Creek's Department of Public Works Newsletter

Kalamazoo River Restoration Project

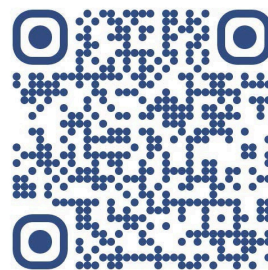
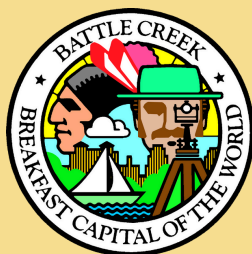


The Kalamazoo River in Downtown Battle Creek is entering a new era. Roughly 60 years ago, a flood reduction project channelized the river with concrete riverbanks to quickly move water away from Downtown. However, the concrete is aging, it's unattractive, has negative impacts to the river's ecology, and it uses an outdated approach to reduce flooding. In reimagining the river, the City of Battle Creek will develop a river corridor concept that utilizes a bank and floodplain of native plants to effectively manage stormwater and flood flows, while improving the natural and aquatic health of the Kalamazoo River. The project will include long-term visioning to help catalyze a revitalized river corridor, support additional recreation options, and improve connectivity to Downtown Battle Creek.

Over the next 18 months, a conceptual plan for the future of the Kalamazoo River corridor will be developed. A team of subject matter experts will be studying how to remove the existing Monroe Street dam, replace the concrete channel with flood tolerant plants, establish the Kalamazoo River corridor as an amenity for residents of Battle Creek, and identify the steps to turn the vision into reality. To begin the process, we want to hear from you; your ideas will help determine the future vision of the Kalamazoo River.

Inside This Issue

- Kalamazoo River Restoration
- Verona Wellfield
- Water Quality Report
- Recycling
- Free Compost
- Trees!
- DPW Events
- DPW Open House
- Sewer System Upgrades
- 2025 Construction
- Parks Millage Projects



Please scan the QR code or visit the link to take the survey. We value your feedback!

<https://ohmplanning.typeform.com/to/h7iPHns>



Helpful Numbers

Always call 911 for emergencies

Need to talk to city staff?

We now have a one-call shop to answer your non-emergency city questions, and help you with service needs.
Hours: 7:30 a.m. - 4 p.m. Monday - Friday
269-966-3311

Water or sewer emergency?

Report emergency issues related to water and sewer on nights and weekends.
269-966-3493

Streetlight out?

Report any issues related to the city's streetlights to Consumers Energy by calling 800-477-5050 or online at streetlights.consumersenergy.com

Battle Creek's Verona Wellfield Rehabilitation

Work continues on the well replacements at the City of Battle Creek's Verona Wellfield, located in the northeast corner of the city. This project is the largest wellfield rehabilitation in the State's history and has provided an opportunity for many in the industry – including young Michigan Department of Environment, Great Lakes and Energy (EGLE) staffers – to see the process first-hand.

The Verona Wellfield is the sole water source for the City of Battle Creek and surrounding areas. To date, all 21 new wells have been drilled to replace the existing wells which were aging and showing signs of deterioration. At the wellfield, groundwater is pumped from the Marshall Sandstone Aquifer (a body of porous rock or sediment saturated with groundwater) to supply the water needs for the customers.

As part of the drilling process, each well has to be “developed” and then the aquifer needs to be tested for productivity at each well. This involves pumping water from each well for eight hours to remove the clay and silt and other materials that are introduced during the drilling process. This helps ensure high quality water for our community and increases the service life of the equipment. As of February 2025, all but two wells had been developed and tested. The existing wells will continue to supply water to the Battle Creek community until necessary permits are secured. The wells are tested for water quality on a daily basis.

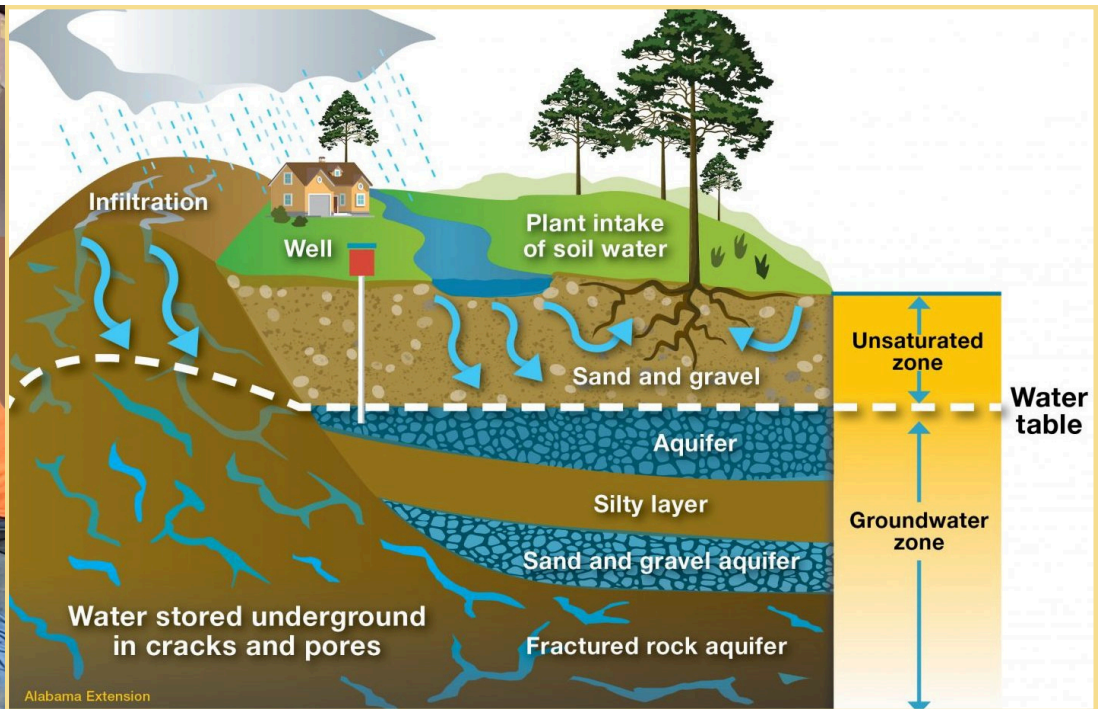
The city continues to work with our contracted engineering firms to provide all required information to the State of Michigan to receive financial support from the Drinking Water State Revolving Fund and to acquire permits with EGLE. With all the required permits secured later this year, the new wells can be connected to the existing water distribution system to continue supplying quality water to our customers.



Dyer Well Drilling crew in the process of drilling in the deep aquifer. During this process, the rock and soils that are being drilled out of the various layers of the earth are brought to the surface with the combined power of water and air forced through the drilling bit.



The crew checking the well casing (a pipe installed vertically to stabilize the soils around the hole down to the ground water) that will be placed in the bore hole from ground surface down to and into the bedrock below.



This graphic shows how rainfall and snowmelt collect in the soil and gravel layers by filtering into the ground. The groundwater can accumulate in areas to form aquifers that can be pumped to provide a source of drinking water for an individual well or municipal wellfields, like the Verona Wellfield. (aces.edu/blog/topics/fish-water/what-is-an-aquifer/)

Water Quality Report Coming Soon

The city's annual water quality report, the Consumer Confidence Report (CCR), will be available by July 1, 2025 to provide information about the source and quality of your drinking water supplied by the City of Battle Creek. The State of Michigan requires every community water system to provide an annual report to its customers to include important information like source of the water, monitored contaminants and whether the water meets state and federal water standards. Each report is a summary of the prior year's data. The 2025 CCR will provide information on the 2024 operating year.

City of Battle Creek water customers will be notified when the 2025 CCR is available via utility bill stuffers or by watching the city's Facebook page. Past year's CCRs are available at battlecreekmi.gov/Archive.aspx?AMID=54 or by contacting the Department of Public Works (269-966-3355) for a hard copy.

For more information on our other water protection efforts, visit bcwater.org/city-efforts to learn about our Wellhead Protection Program, Sustainability Plan, Municipal Stormwater Permit and our Stormwater Technical Reference Manual.



Curbside Recycling Reminders



YES!

- Corrugated cardboard - flattened
- Magazines, newspapers, office paper, envelopes
- Tin and aluminum food cans and foil
- Pizza boxes - some grease is okay, but NO food
- Plastics #1-7 food, drink or detergent/cleaning product containers
- Glass bottles and jars (no lids)
- Clean and dry
- Keep everything LOOSE in cart



NO!

- Plastic bags
- Paper towels, paper napkins, paper plates
- Shredded paper
- Styrofoam
- Diapers
- Scrap metal (anything that isn't a food/beverage container)
- Food scraps or liquids
- Plastic toys, non-food containers
- Hoses, batteries, light bulbs
- Anything in a bag, box or other container

- City of Battle Creek residents with curbside solid waste service can request one recycling cart (at no additional charge) by calling Republic Services at (269) 216-8008.
- Weekly **Yard Waste** collection begins April 7 and continues through December 15, 2025.
- Republic Services Curbside Spring Cleanup is the week of May 19-23 (see bcwater.org/garbage-yard-waste).



For more recycling options, visit:
Calhouncountymi.gov/recycling

Questions? Email: pjhoch@battlecreekmi.gov

Free Compost Available



Calling all gardeners! The city has free compost available for pickup at the Wastewater Treatment Plant (WWTP), located at 2000 River Road, Battle Creek. The compost is made from carefully-processed biosolids (nutrient-rich organic materials which remain following treatment of domestic sewage) from the city's WWTP. The compost, called Battle CreEQ Gold, has satisfied a number of criteria required by the State of Michigan to assure that the material is safe for use as compost. By achieving strict time, temperature, stability and maturity requirements of the State, these residuals are able to be classified as Class A Exceptional Quality (EQ) composted biosolids. These approved biosolids can be applied to flower beds, lawns and even vegetable gardens.



Those interested in getting some free Battle CreEQ Gold compost will need to call in advance for a pickup time. Residents are allowed up to one metric ton (roughly a standard pickup truck bed load) per visit. Please contact the Wastewater Treatment Plant staff at **269-966-3513** to schedule a pick up.



Tree planting will continue at this location into 2026 resulting in a total of over 4,300 new native trees and shrubs. This grant will also include upcoming outreach and educational programs related to forestry and birding.

If you are interested in volunteer tree planting opportunities (for yourself or a group) or attending one of our birding and tree events, please visit bcwater.org/events or contact beploeg@battlecreekmi.gov for more information. We hope to see you in 2025!

Tree planting efforts continue in the city with over 1,000 trees planted on city properties in 2024. Planting locations included the Jackson Street forest, Willard Beach, and the Department of Public Works. This year also marks Battle Creek's 24th consecutive year as a "Tree City USA" community. In 2024, only 120 Michigan communities were certified as "Tree Cities" in Michigan and 3,577 communities were recognized nationally.

A grant from the National Fish and Wildlife Foundation provided funding to purchase wildlife-friendly, native trees along Jackson Street to increase diversity and combat the spread of invasive species in this actively-managed forest.



2025 RECYCLING COLLECTIONS AND ENVIRONMENTAL EVENTS

Scrap Tire Recycling - City of Battle Creek residents only

ACCEPTED TIRES:

- ✓ Lawn mower; Residential passenger vehicles (cars/trucks); Semi tires; Motorcycle tires

NOT ACCEPTED:

- ✗ Tractor tires; Tires with rims; **NO COMMERCIAL TIRES**



Department of Public Works
150 S. Kendall St., Battle Creek



Wednesday, Sept. 24
4 - 6 p.m.

Residents are allowed a maximum of 10 tires per visit.

Polystyrene #6 (Styrofoam) Recycling - City of Battle Creek residents only

ACCEPTED:

- ✓ Egg cartons, take-out food containers, meat trays, drink cups, disposable coolers and packing materials. All materials must be clean and dry.

Pre-sort items into food containers and coolers/packing material to help volunteers process materials more quickly.

NOT ACCEPTED:

- ✗ Packing peanuts, insulation sheets, flexible foam wrap



Department of Public Works
150 S. Kendall St., Battle Creek



Saturday, Nov. 1
9 - 11 a.m.

Other Events

2025 Calhoun County Recycling Events (Free to all Calhoun County residents)

Electronics, Tires*, and Household Hazardous Waste (*pending grant funding)

Visit the Calhoun County website for current information.

https://www.calhouncountymi.gov/departments/recycling_and_solid_waste/events.php



Tree Planting

April 7-26



Earth Day/Linear Park Cleanup

April 20-26



Krazy for the Kazoo River Cleanup

Saturday, October 4, 8:30 - 11 a.m.

Pre-registration is required for cleanup and planting events.

Visit: bcwater.org, scan the **QR Code** or contact Bessie Ploeg at beploeg@battlecreekmi.gov or (269) 966-3355 ext. 1889 for more information.



***All events are subject to change.**

For an updated listing, visit: bcwater.org/events.

Department of Public Works Open House



Come by the Department of Public Works on Wednesday, **May 14***, to learn more about what we do for the City of Battle Creek! We will be hosting a **FREE** Open House for all to see our trucks and equipment, meet our staff and learn about some of our ongoing projects. We will have some hands-on demonstrations, a chance to sit in the trucks (and honk the horns!), free giveaways, fun kids' activities, a food truck, music and more. We hope to see you there!

**Rain date: Wednesday, June 4, 2025*

Date: Wednesday, May 14, 2025

Time: 4 - 6 p.m.

Location: 150 S. Kendall St., Battle Creek, MI 49037

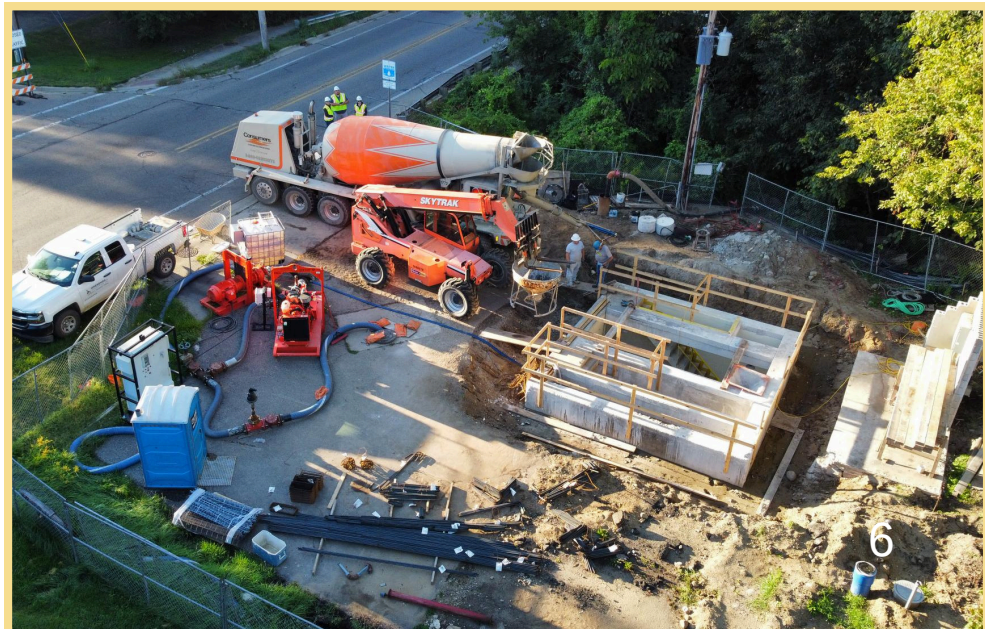
More information: (269) 966-3355



Upgrades to Sewer System

The City of Battle Creek recently completed a major upgrade to the Minges Brook Pump Station, located at the intersection of Capital Avenue SW and Wahwahtaysee Way. This pump station, which lifts wastewater from lower elevations for transport to the city's Wastewater Treatment Plant, is a critical component of the city's sanitary sewer system. Originally built in the 1960s, the station faced increasing maintenance challenges due to aging infrastructure and outdated design. The city contracted with Jones & Henry Engineers (J&H) who devised an innovative solution, converting the station to a fully submersible design that tripled storage capacity and improved emergency response time, all while addressing spatial and environmental constraints. This modernization involved careful demolition, structural enhancements, and the installation of right-sized pumps tailored to current flow conditions. The project minimized disruption to the surrounding area and ensured compliance with updated environmental standards.

Constructed by RK Davis, the construction overcame significant challenges, including site space limitations, continuous bypass pumping, and nationwide delays in supplies. Key upgrades included the application of a durable Obic liner to protect the wet well, installation of new pumps, and structural modifications to improve reliability. Now operational, the new Minges Brook Pump Station enhances the city's wastewater management system, reducing maintenance costs and ensuring dependable service for decades to come. This project is another example of the city's commitment to modernizing critical infrastructure to safeguard public health, protect the environment, and responsibly manage financial resources.



ROAD CONSTRUCTION 2025



Pending approval from the City Commission, the Engineering Division is preparing the following projects to be completed during the 2025 construction season.

The following roads will be **chip sealed**:

- Meadow Ave. - Capital Ave. to Riverside Dr.
- Eastfield Dr. - Riverside Dr. to Ridgeway Dr.
- Westfield Dr. - Northfield Dr. to Southfield Dr.
- Northfield Dr. - Westfield Dr. to Lincoln Blvd.
- Southfield Dr. - Westfield Dr. to Lincoln Blvd.
- Clover Ln. - Eastfield Dr. to Country Club Blvd.
- Ridgeway Dr. - Eastfield Dr. to Country Club Blvd.
- Lincoln Blvd. - Northfield Dr. to Country Club Blvd.
- Bittersweet Ln. - Eastfield Dr. to Country Club Blvd.
- Briarwood Dr. - Northfield Dr. to Southfield Dr.
- Moorelood Dr. - Eastfield Dr. to Country Club Blvd.
- Howland St. - Parkway Dr. - W. Roosevelt Ave.
- Vineyard Ave. - Kendall St. to Washington Ave.
- Helen Montgomery Ave. - Hubbard St. to Wood St.
- Helen Montgomery Ave. - Wood St. To Kendall St.
- Beglin Ct. - entire road
- Blenken Ct. - entire road
- Wahwahtaysee Way - Capital Ave. SW to Riverside Dr.



What is **chip seal**? Inexpensive, effective method to extend pavement life. The road is swept to remove dust, a liquid layer is sprayed onto the road, and chips (aka aggregate) is applied and rolled over. Excess chips are swept off or vacuumed up, then a thin layer of fog seal is placed to seal the road.

The following roads will be **milled and paved**:

- Springview Dr. - Roosevelt Ave. to North Ave.
- Maple Grove Ave. - Capital Ave. NE to Lark St.
- Evans St. - Capital Ave. NE to Maple Grove Ave.
- N. Lavista Blvd. - Goguac St. to Territorial Rd.
- Perry Rd. - Beckley Rd. to S. Minges Rd.
- S. Minges Rd. - Beckly Rd. to 3 1/2 Mile Rd.
- 3 1/2 Mile Rd. - S. Minges Rd. to Division Dr.
- Division Dr. - Helmer Rd. to 3 1/2 Mile Rd.
- Moffitt Pl. - Jordan St. to Hubbard St.



What is **milling and paving**? A quick process in which the existing pavement has the top 1-3 inches milled off - enough to remove defects - after which a new layer of asphalt is laid. Prior to resurfacing, road work crews will also perform lead service line replacements and sidewalk ramp upgrades, where possible.

The following location will receive **culvert replacement and watermain and sewer installation**:

- Watkins Rd. - Helmer Rd. to Minges Rd. S.

The following location will receive **milling, resurfacing, and sidewalk ramp upgrades for ADA compliance**:

- 20th St. - Columbia Ave. to Goguac St. W.
- Michigan Ave. W. - Washington Ave. to United Way
- Porter St. - Michigan Ave. E. to 2nd St.
- Sonoma Rd. - City limits to Beckley Rd.

The following location will receive **bridge repairs**:

- 20th St. Bridge over the Kalamazoo River

The bridge will undergo preventative maintenance that will repair deck joints and deck resurfacing. This project will require the bridge to be closed for 4-5 weeks in July/August while the work is performed.

Questions/concerns should be forwarded to our Call Center at 269-966-3311. Your call will be directed to the appropriate Engineering Division staff person.

Customers can also get information on these projects and others (water main breaks, garbage delays, city closures, etc.) by signing up for alerts:
battlecreekmi.gov/notifyme



To view the 2025 Street Treatments Map go to battlecreekmi.gov/publicworks, click on "Engineering" and scroll to "2025 Street Treatments."



Battle Creek Parks Millage Projects

In August of 2020, Calhoun County voters passed a Parks Millage of 0.2 mills per year (\$0.20 per \$1000) taxable valuation of all real and tangible personal property in the County. These funds can only be used for park expenses considered to be above routine maintenance – meaning they cannot be used for activities such as mowing grass. This millage was for a five-year period of 2020 through 2024. This millage is a 50/50 split between the county and municipal governments (cities, villages, and townships.) The voters renewed this millage for another five years in August of 2024. For more information on the Calhoun County Parks Millage, visit: calhouncountymi.gov/departments/parks_millage.php

The following projects in the City of Battle Creek utilized dollars received from the Calhoun County Parks Millage:

- 2022: Replacement of wood decking on the “blue bridge” over Helmer Brook (\$13,580)
- 2022: Repaved 1.6 miles of Linear Path from Washington Ave. to 20th St. (\$210,520)
- 2022: Repaired significant crack in basketball courts at Claude Evans Park (\$9,240)
- 2024: Soil borings and classification at Claude Evans basketball courts (\$4,280)
- 2025/26: Will be using millage dollars as the city's contribution for a permanent restroom at ANYbodies Playground (\$290,800)
- 2026 to 2029: Specific details are T.B.D., but improvements to our park buildings, new amenities such as benches and picnic tables, playground improvements, together with continued repaving of the Linear Path and parking areas.



Blue bridge before repairs



Blue bridge after repairs



Linear path repaving

